



**SERVICE INSTRUCTIONS**  
**KNOCK DOWN EXPOSURE RACK**

<b>applicable models:</b>	Standard Knock Down Exposure Rack
<b>applicable serial numbers:</b>	N/A
<b>applicable kit numbers:</b>	FL-3055-K

<b>Approvals</b>		
written by:	reviewed by:	Approved by:

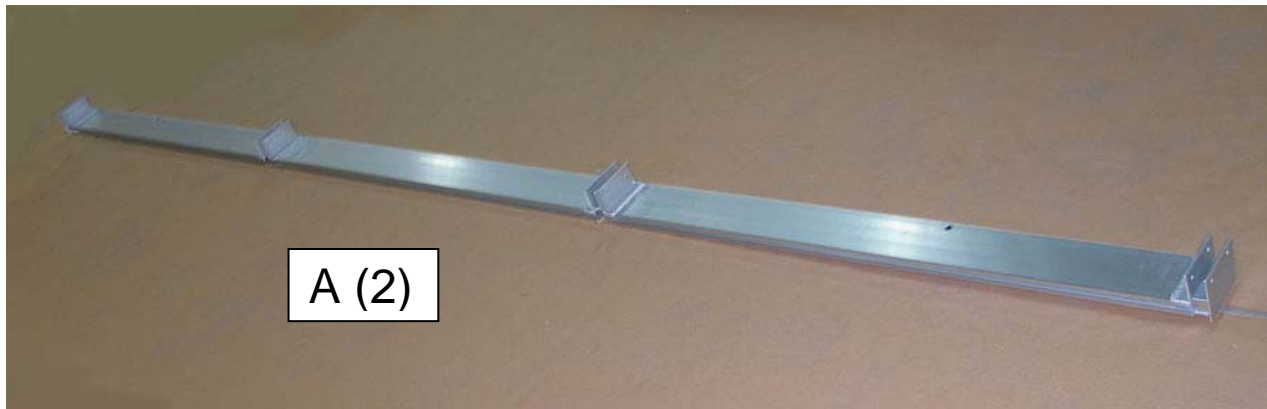
**Safety Reminder**

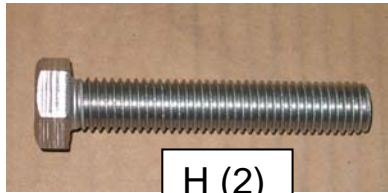
These instructions do not intend to address all of the safety problems, if any, associated with their use. It is the responsibility of the user of these instructions to establish appropriate safety and health practices and to determine the applicability of regulatory limitations prior to use.

**Summary**

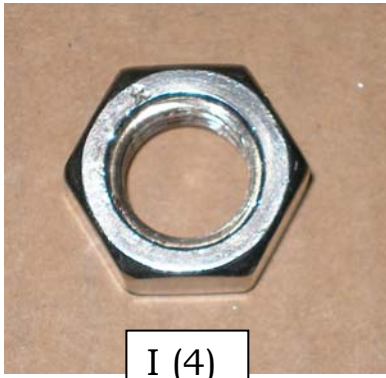
These instructions are a step by step graphic diagram of how to assemble a Q-Lab standard knock down rack.

**Kit Contains:**

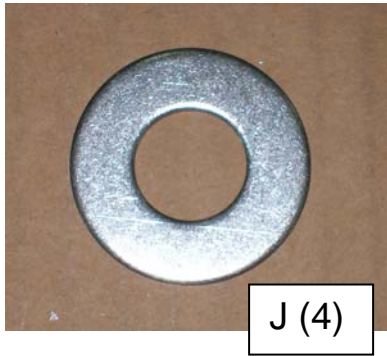




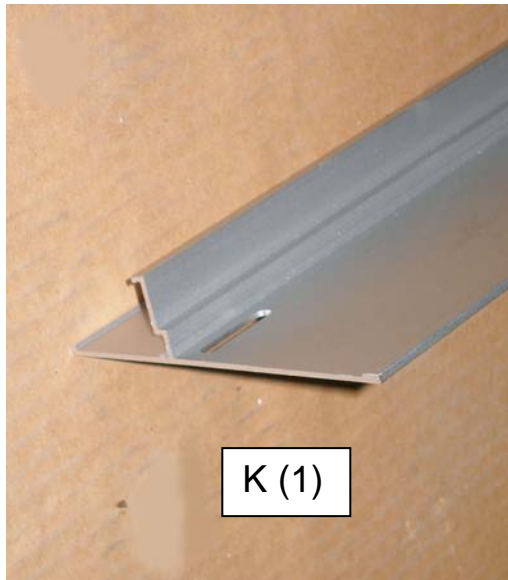
H (2)



I (4)



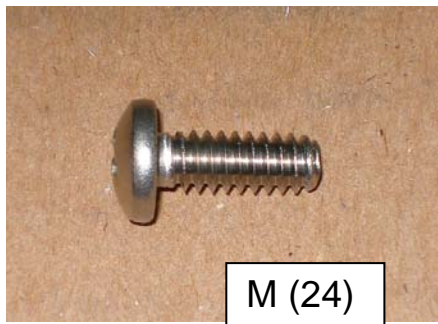
J (4)



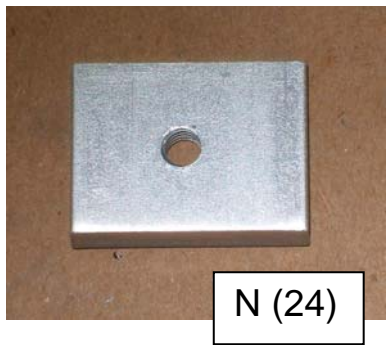
K (1)



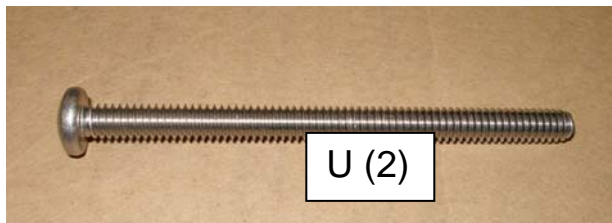
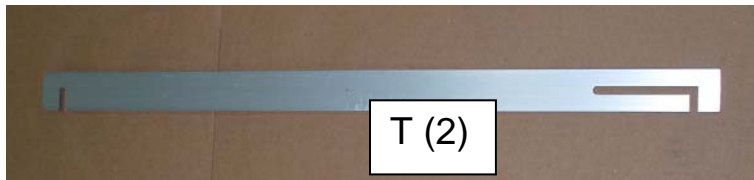
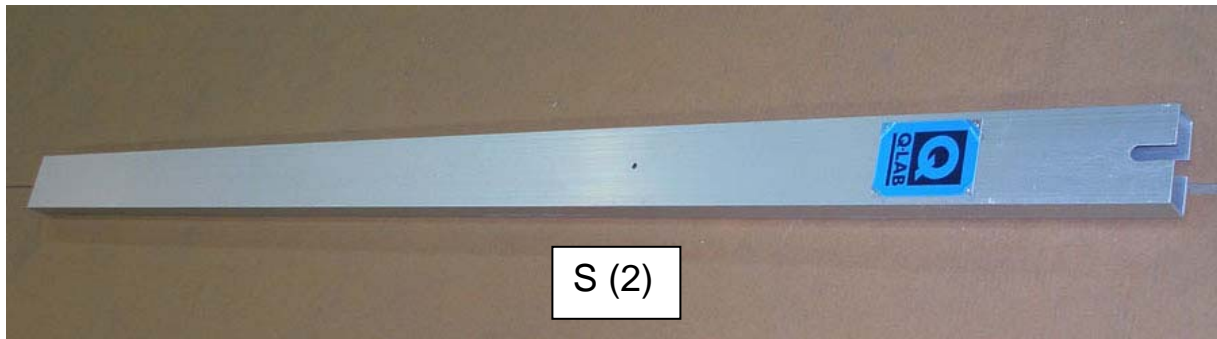
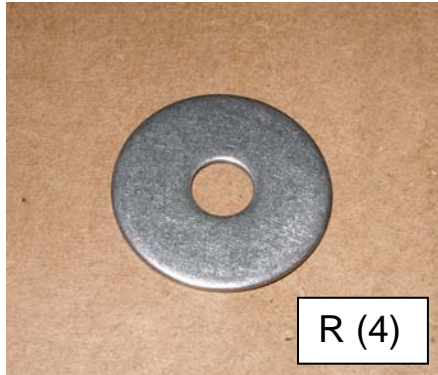
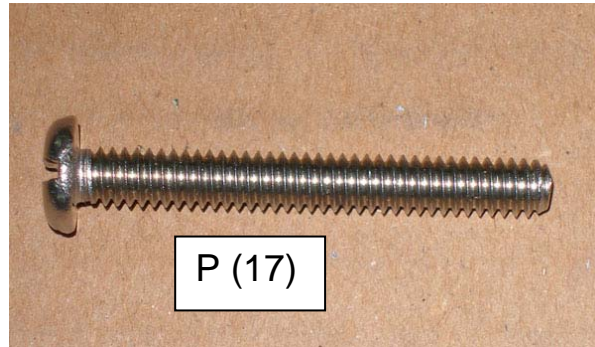
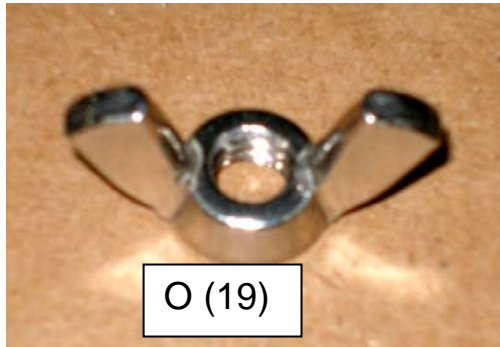
L (5)



M (24)



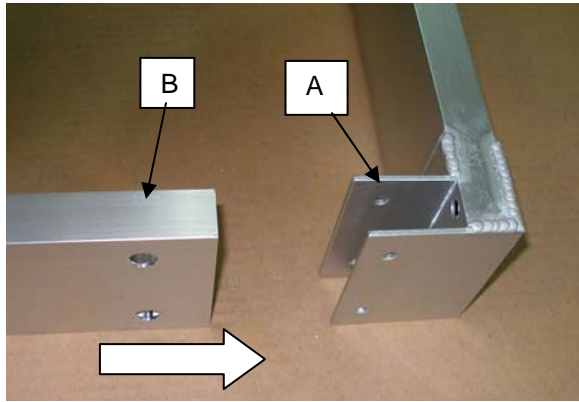
N (24)



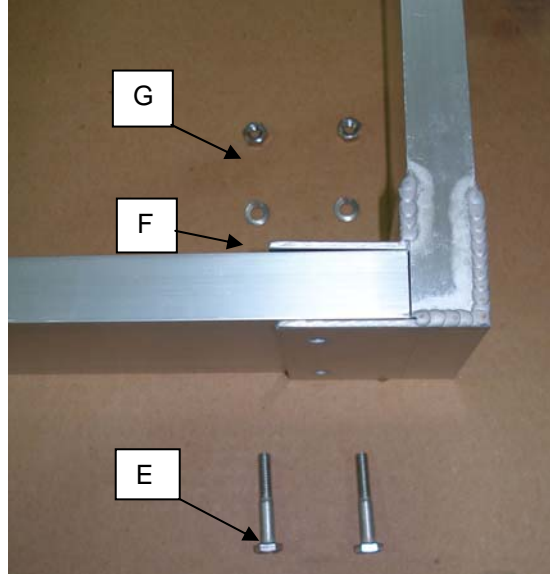
**Tools Needed:**



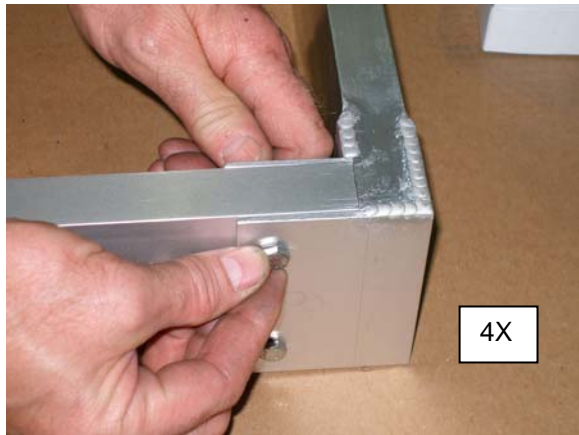
**Instructions:**



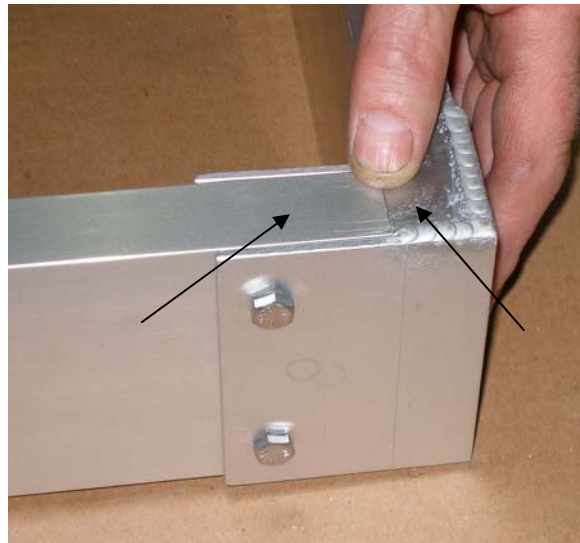
Step 1



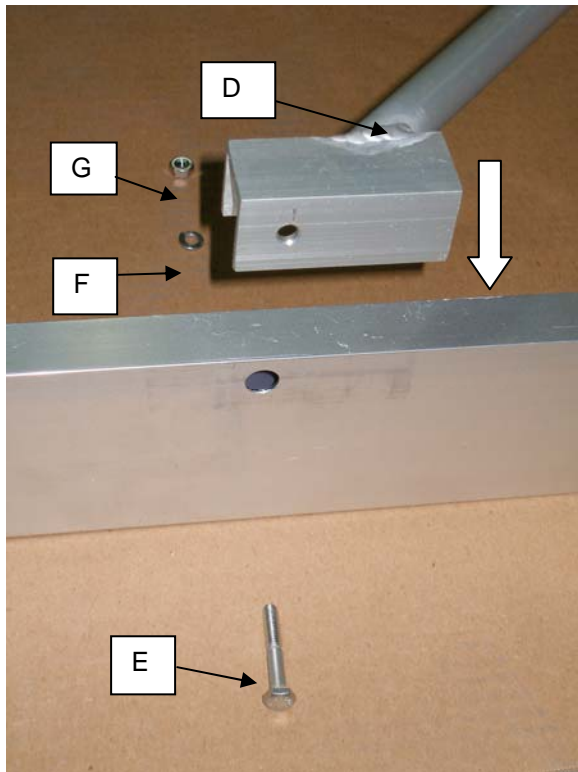
Step 2



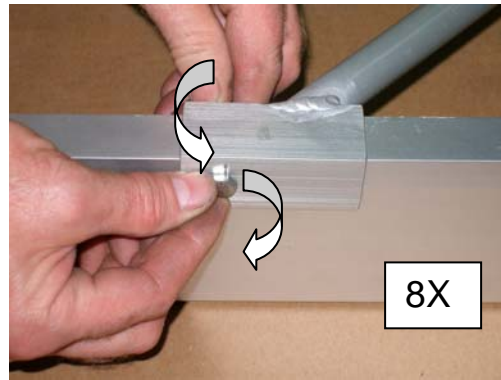
Step 3  
Finger tight



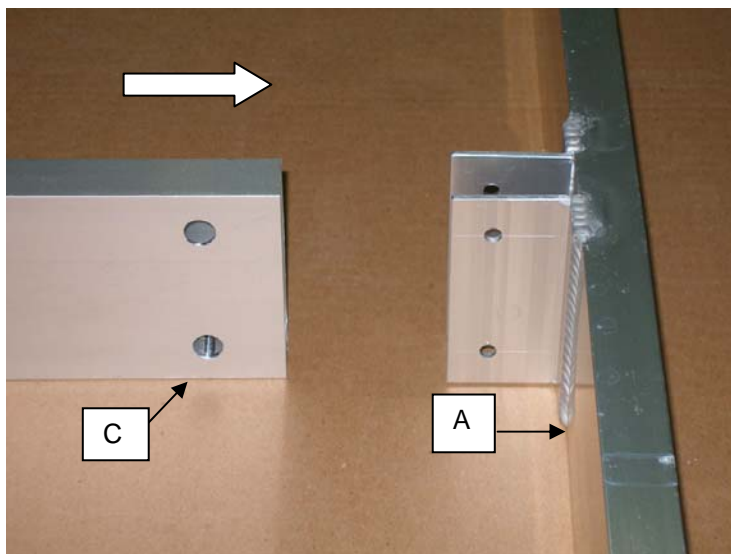
Step 4  
Surfaces must be flush



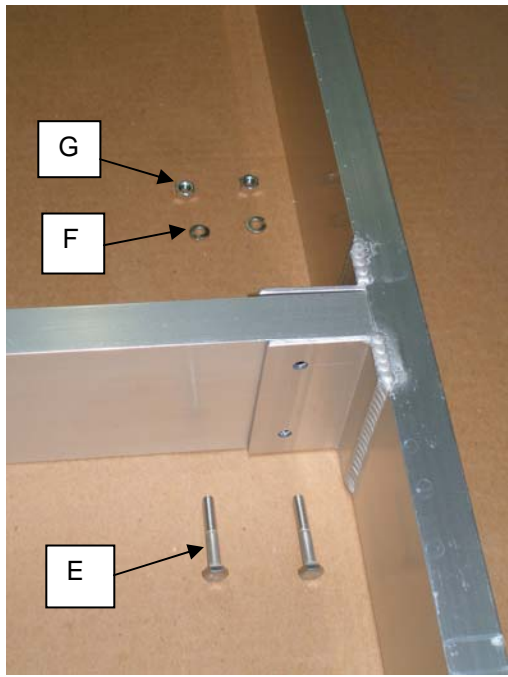
Step 5



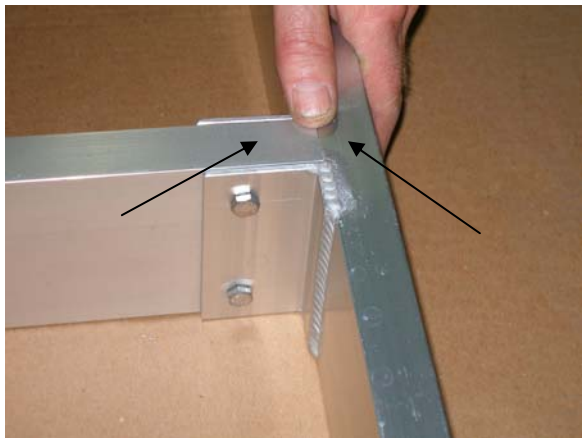
Step 6  
Finger tight



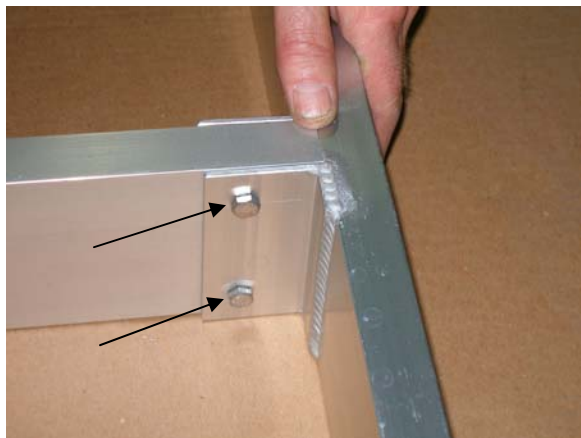
Step 7



Step 8



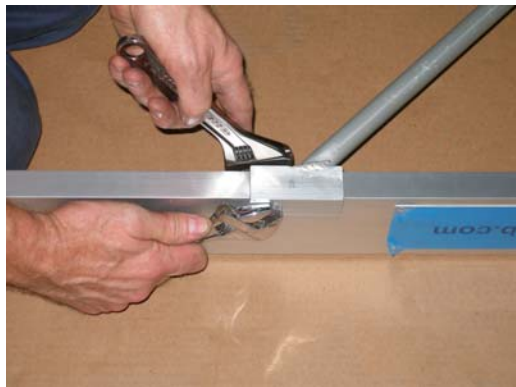
Step 9  
Surfaces must be flush



Step 10  
Finger tight

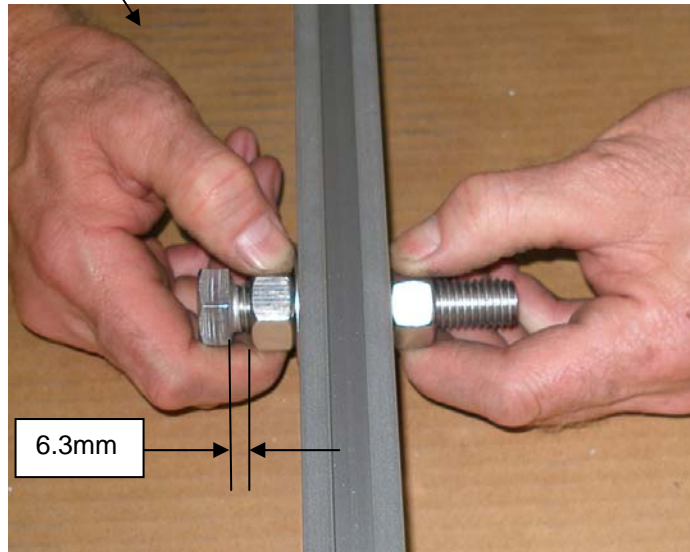
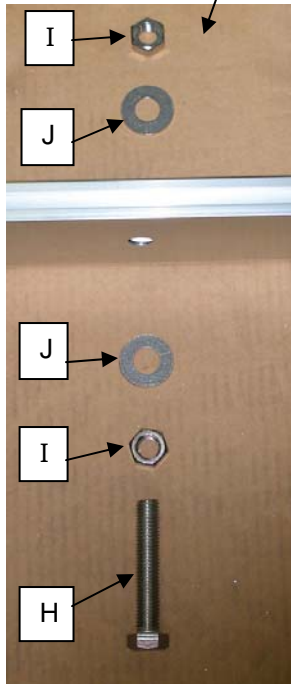
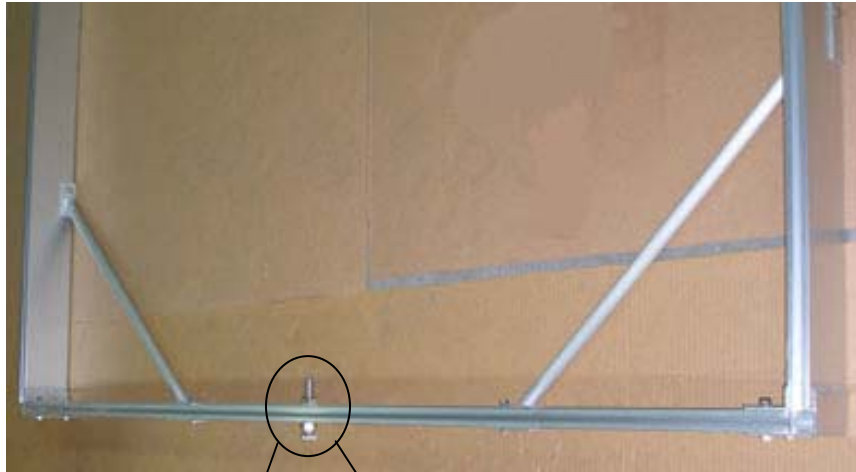


Step 11  
Frame must be square

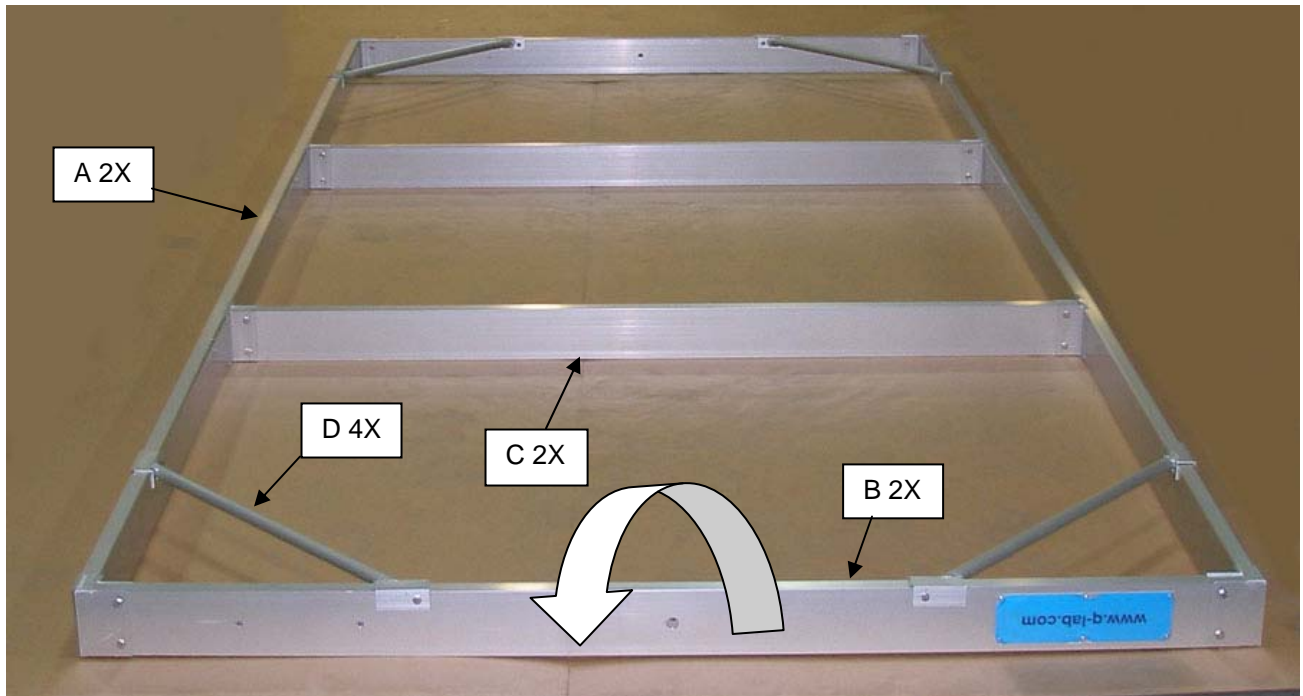


Step 12

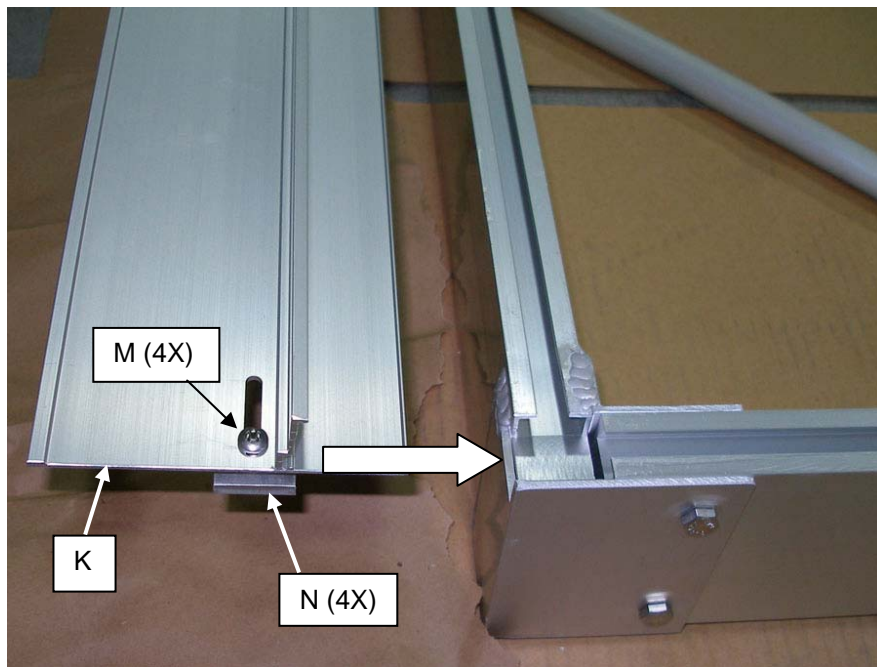




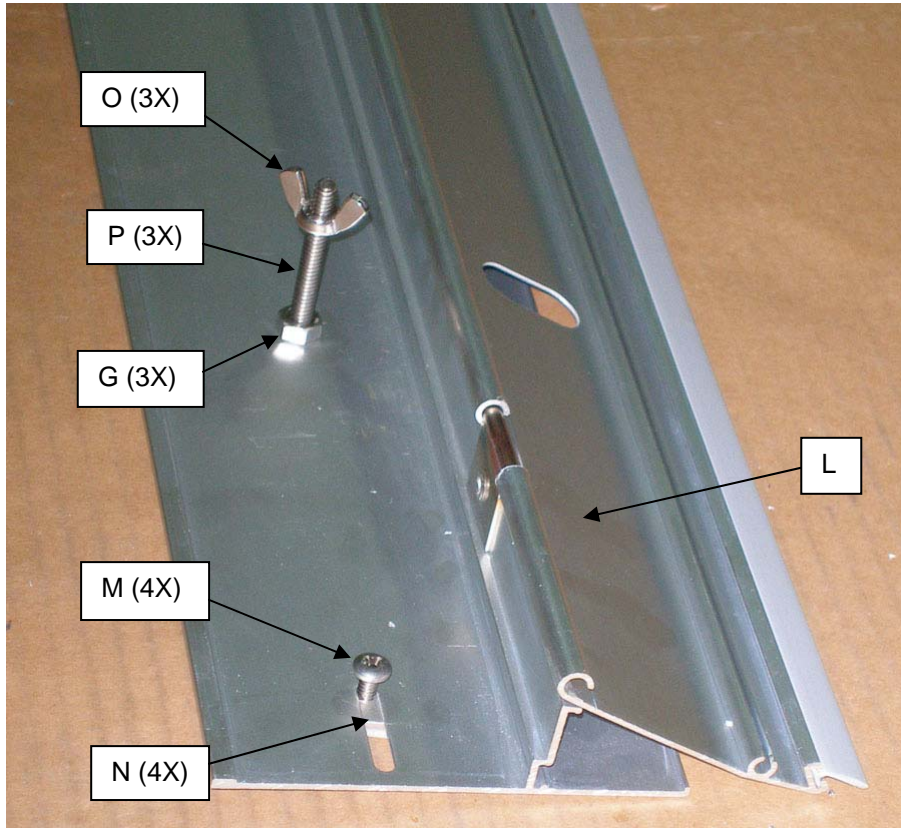
Step 13



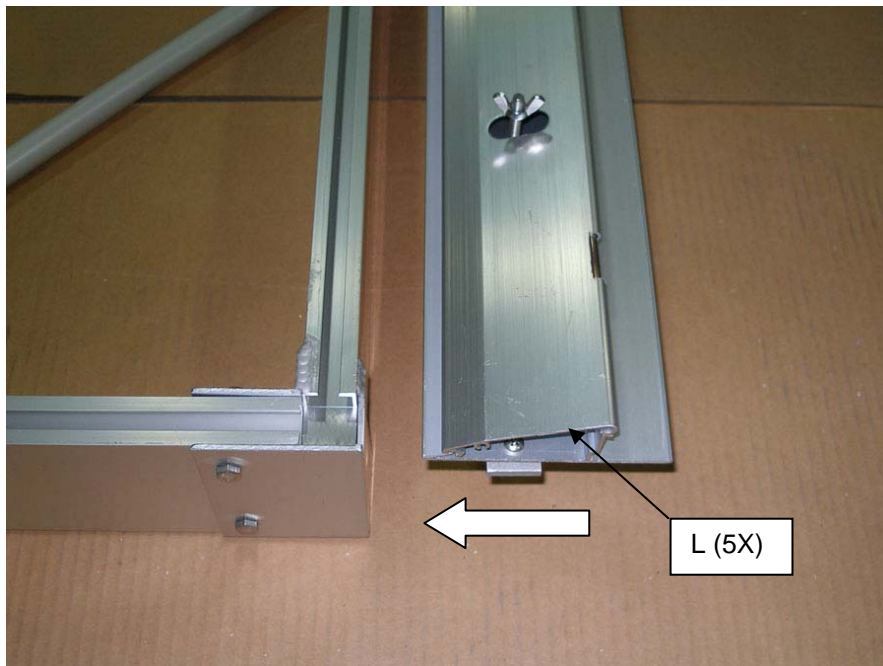
Step 14  
Turn frame over



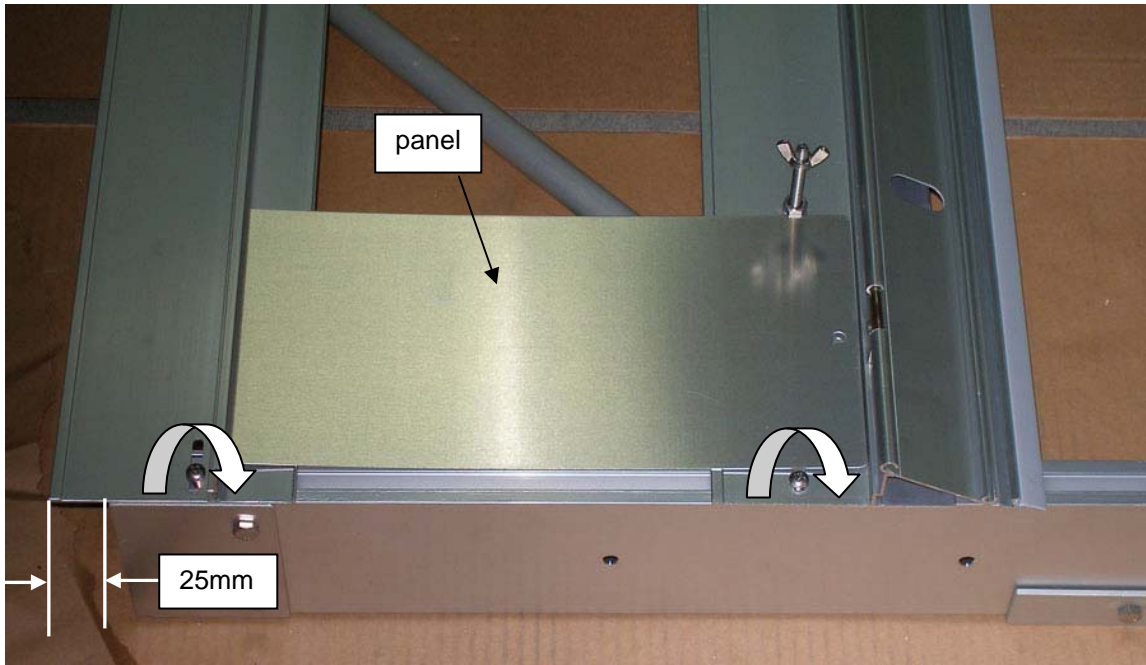
Step 15



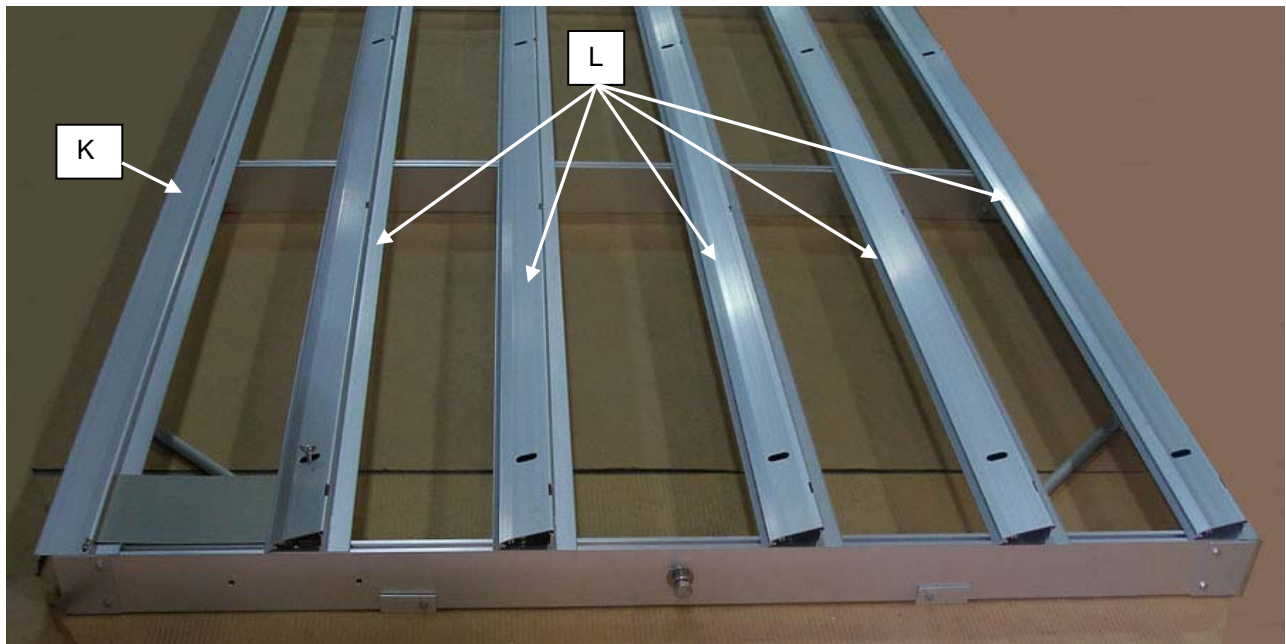
Step 16  
Assemble 5 flaps



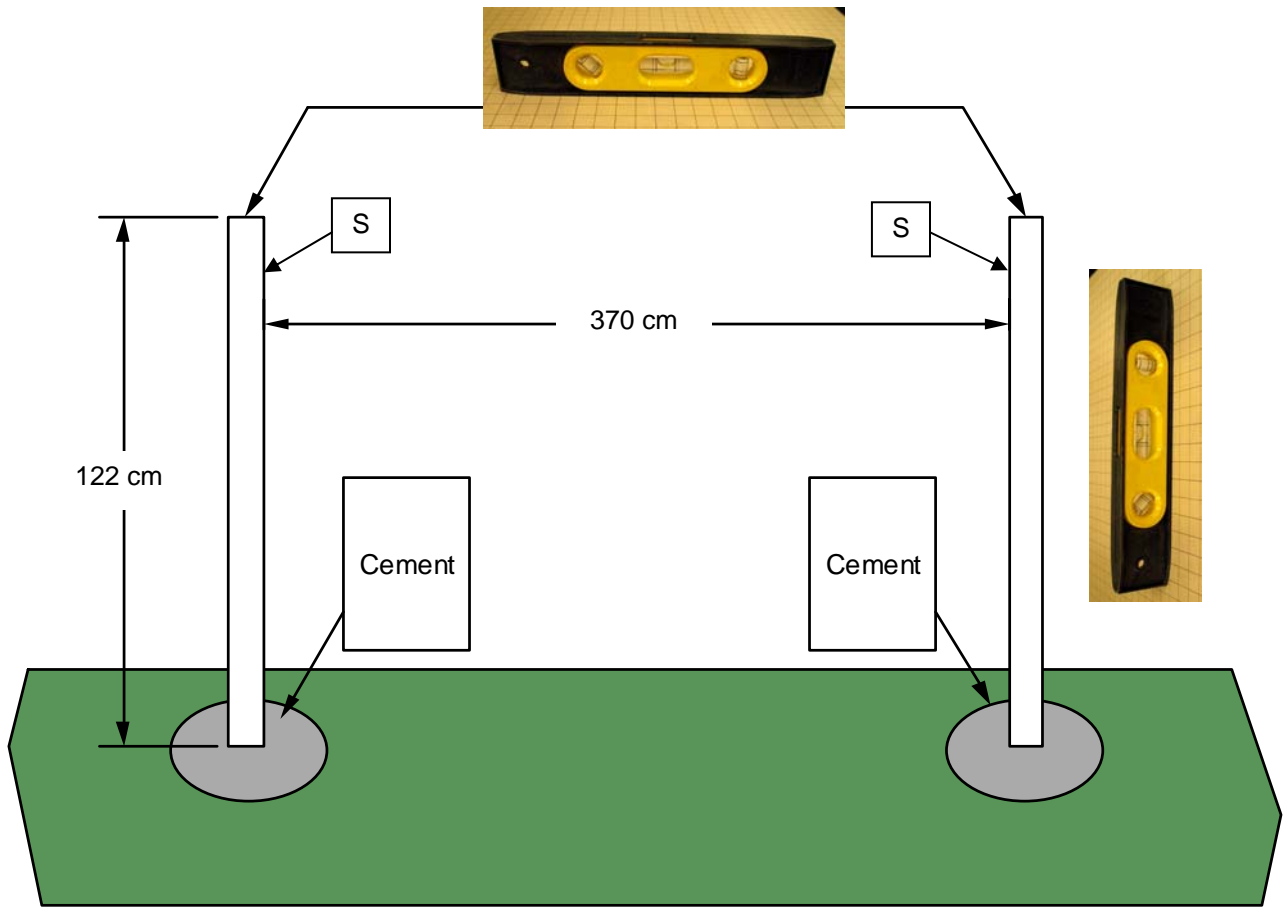
Step 17



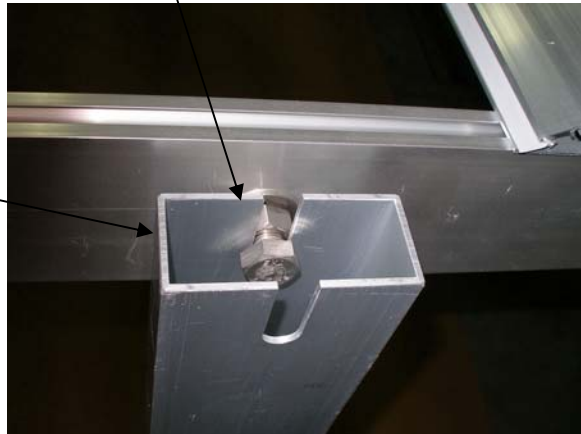
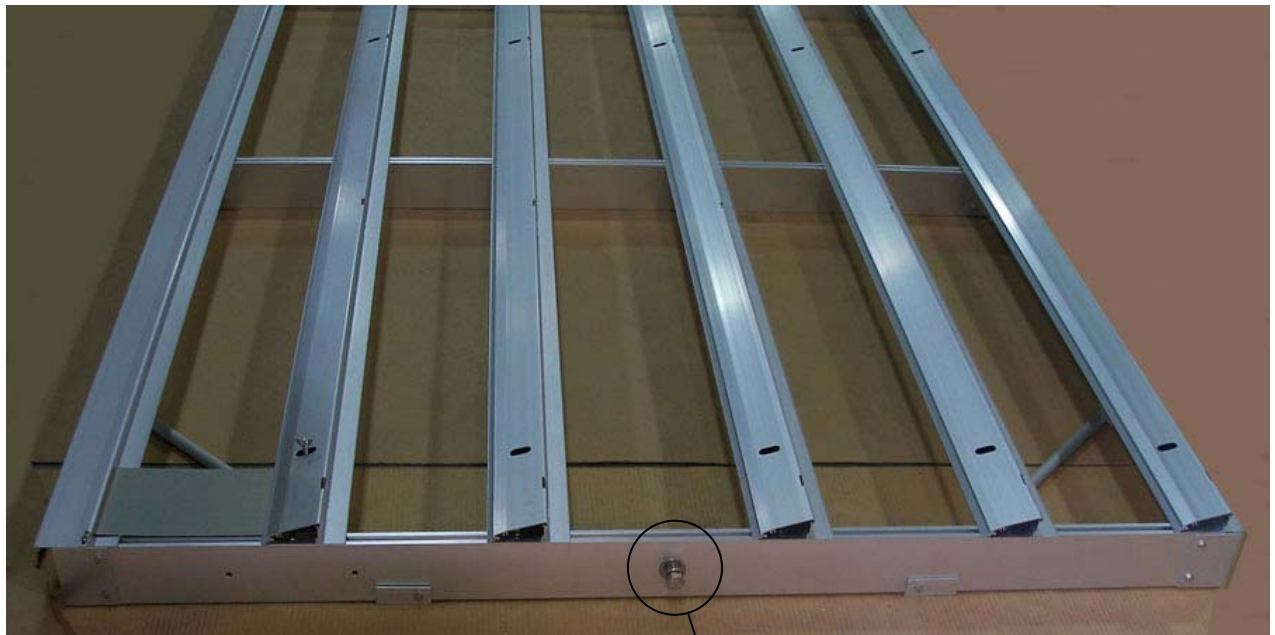
Step 18  
Set flap distance



Step 19



Step 20  
Install legs



Step 21



Step 22  
Both sides